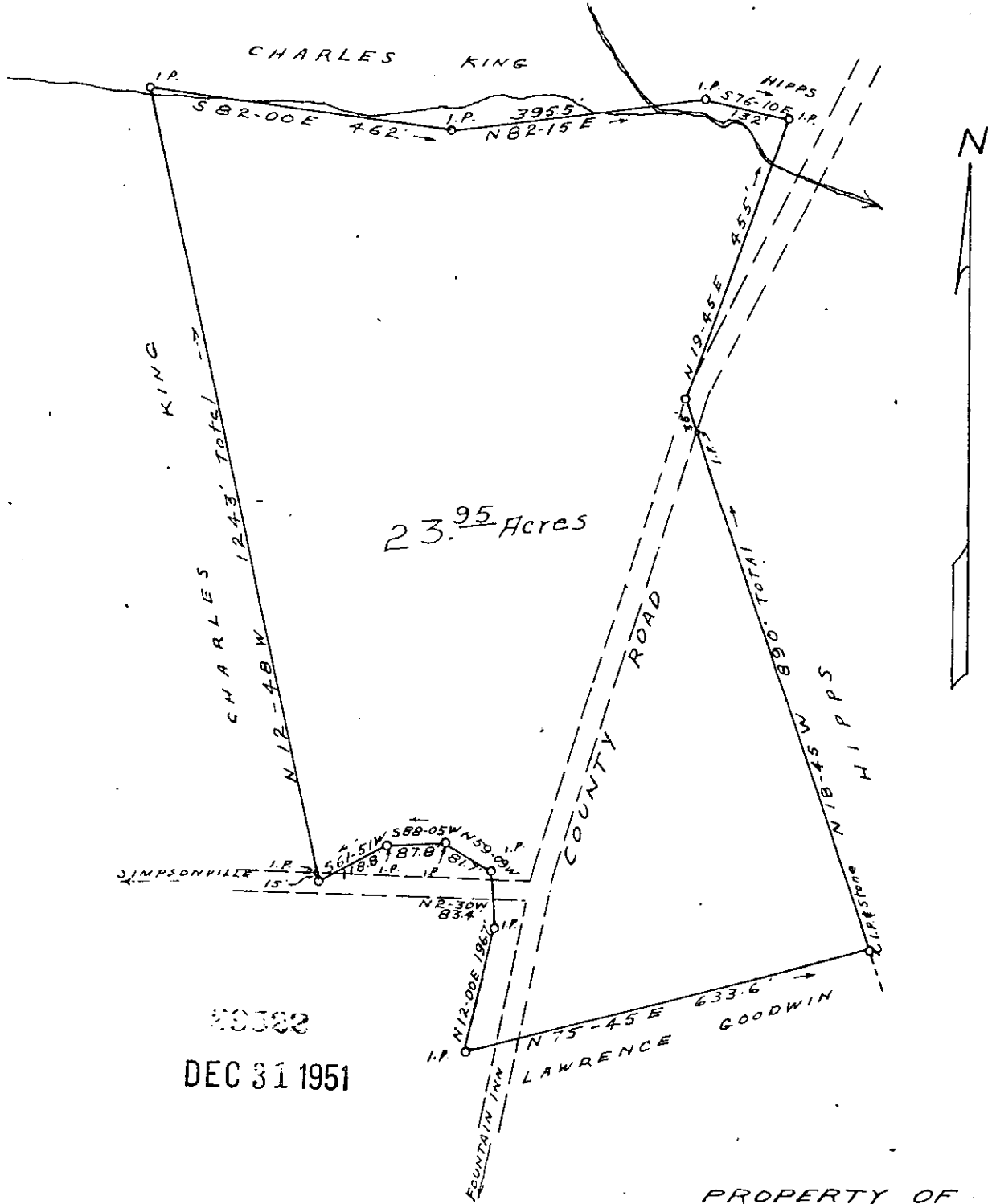


DEC 31 2 43 PM 1951

OLLIE FARNSWORTH
R.M.C.

For Deed in connection with this Plat See Deed Book 448, page 211



29522
DEC 31 1951

PROPERTY OF
CLAUDE HAMBY

GREENVILLE COUNTY S. C.
SCALE 1" = 200'

DEC. 6, 1951

Recorded December 31st. 1951 at 2:43 P. M.
#29522

Field Book C-51

W. L. Riddle - Sur